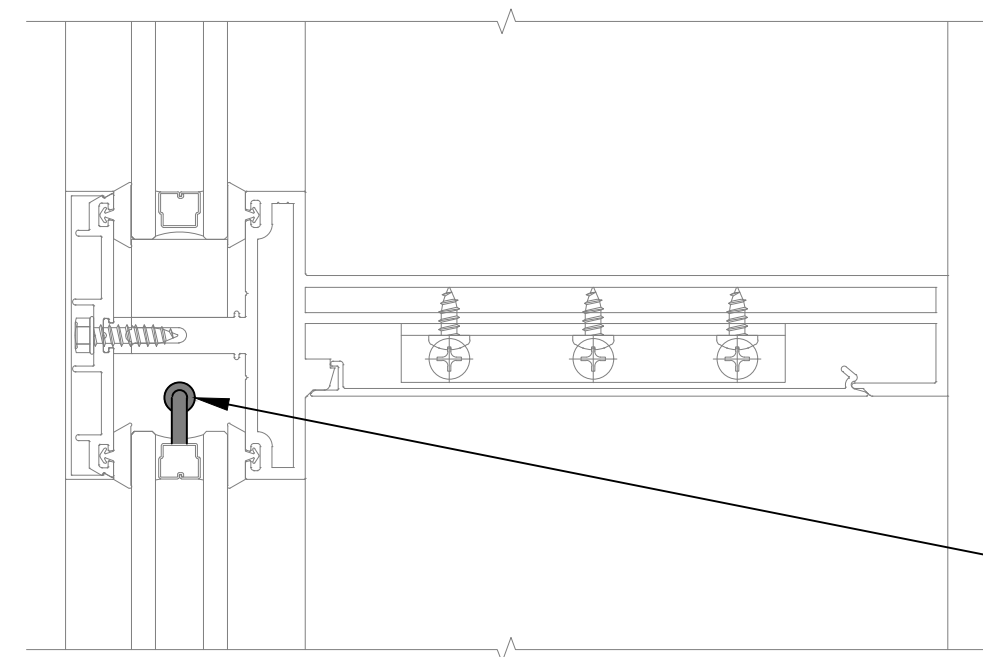


IGU CABLE CONNECTION TO IGU SWC IN GLAZING POCKET. RUN CABLE TO VERTICAL IN GLAZING POCKET

**DETAIL 1**  
HEAD

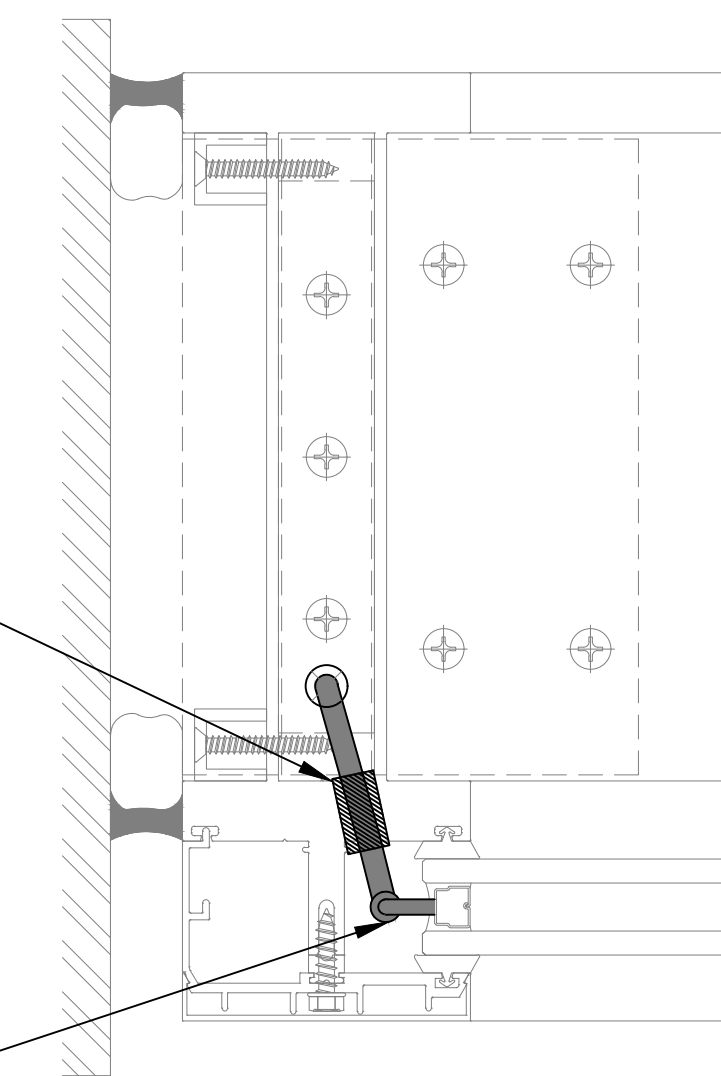
- NOTES:
1. INSTALLER TO PROVIDE GROMMETS AT ALL FRAME PENETRATIONS WHERE POSSIBLE TO AVOID CABLE DAMAGE.
  2. INSTALLER TO LABEL IGU CABLES WITH IGU NAME TO WHICH IT IS CONNECTED.
  3. WHEN GLAZING POCKET CANNOT ACCOMMODATE IGU/SWC, INCORPORATE SERVICE LOOP INTO IGU CABLING. MAKE CONNECTION TO SWC AS YOU ARE GLAZING AND PUSH CONNECTOR THROUGH HOLE AND INTO MULLION.
  4. NO WIRE ROUTING IN SILL.



MIN. 7/16" DIA. HOLE FOR IGU CABLE TO FILE ALL EDGES SMOOTH. INSTALL SILICONE GROMMET, BACKFILL WITH SILICONE SEALANT.

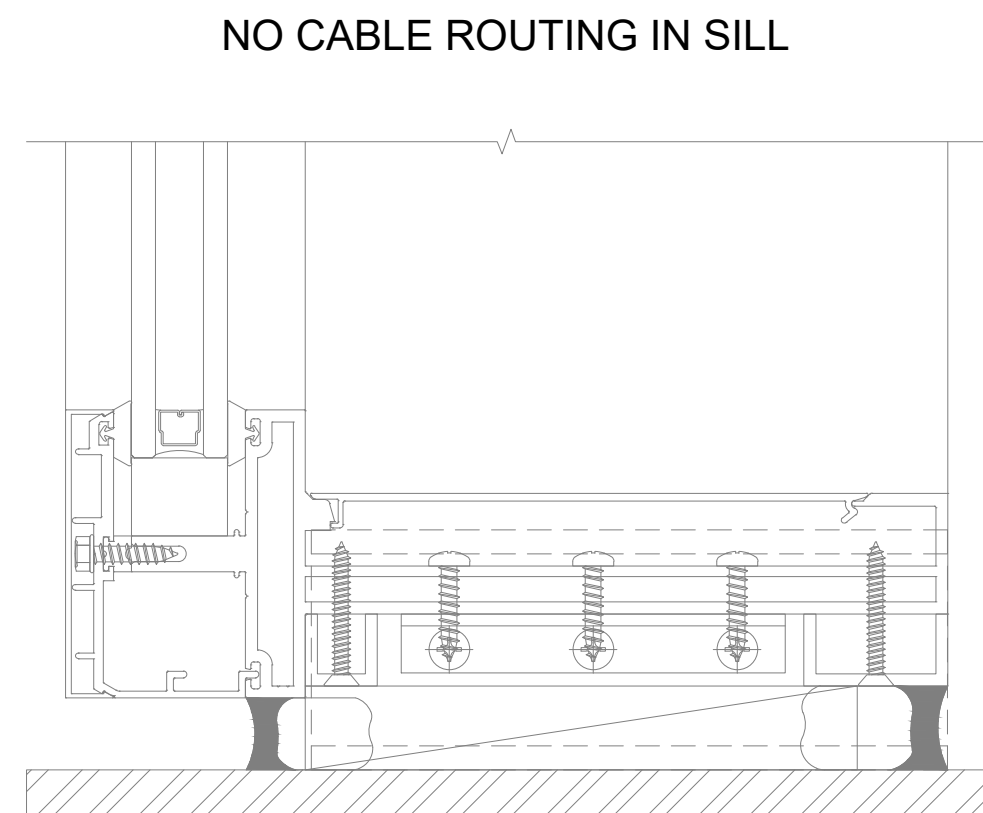
IGU CABLE CONNECTION TO IGU SWC IN GLAZING POCKET. RUN CABLE TO VERTICAL IN GLAZING POCKET

**DETAIL 2**  
HORIZONTAL MULLION



IGU CABLE CONNECTION TO IGU SWC IN GLAZING POCKET.

**DETAIL 4**  
LEFT JAMB

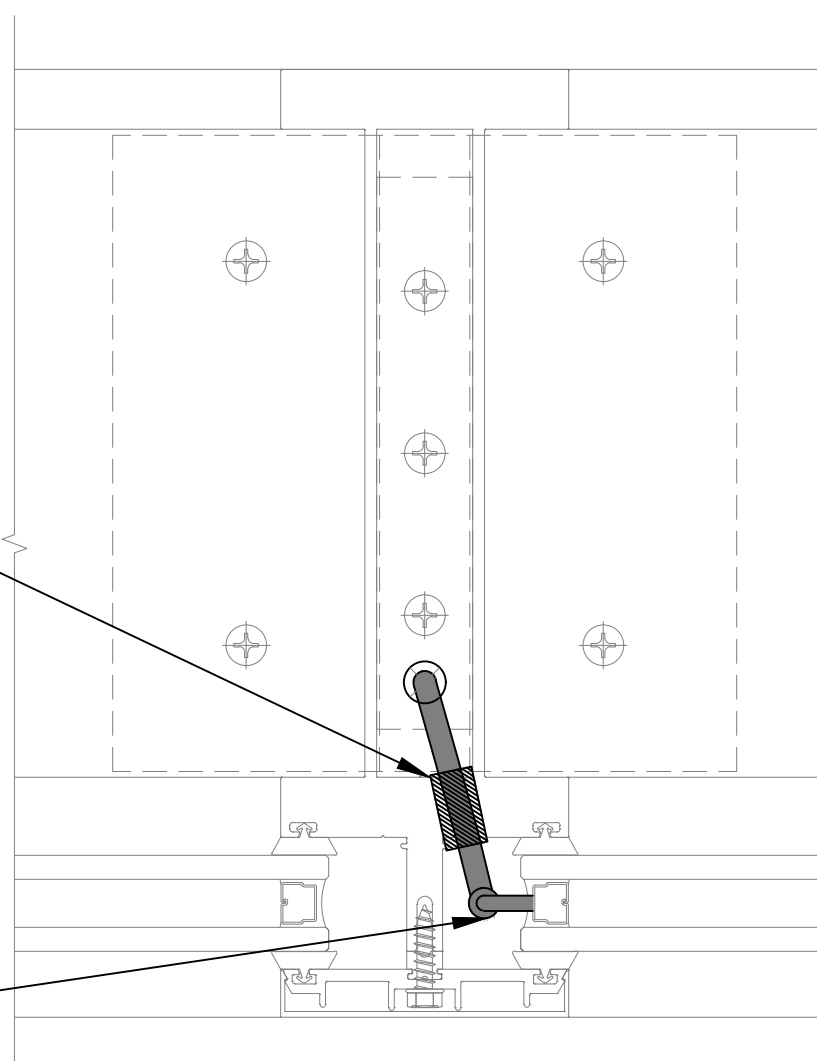


NO CABLE ROUTING IN SILL

**DETAIL 3**  
SILL

MIN. 7/16" DIA. HOLE FOR IGU CABLE TO FILE ALL EDGES SMOOTH. INSTALL SILICONE GROMMET, BACKFILL WITH SILICONE SEALANT.

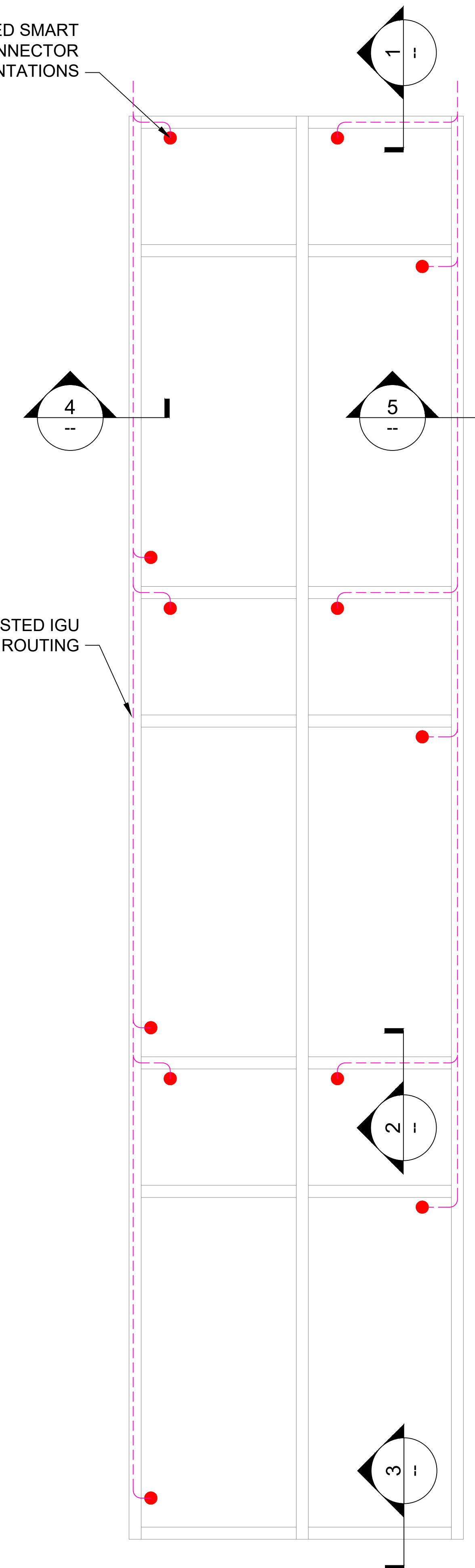
IGU CABLE CONNECTION TO IGU SWC IN GLAZING POCKET.



**DETAIL 5**  
VERTICAL MULLION

SUGGESTED SMART WINDOW CONNECTOR (SWC) ORIENTATIONS

SUGGESTED IGU CABLE ROUTING



**TYPICAL ELEVATION**  
SCALE: NONE